

# Beyond Borders

A Cross-Basin Exploration of Commonalities, Differences,  
and Solutions for Water Preservation Strategies



**COLORADO**  
Department of Agriculture



**LOWER ARKANSAS VALLEY**  
Water Conservancy District





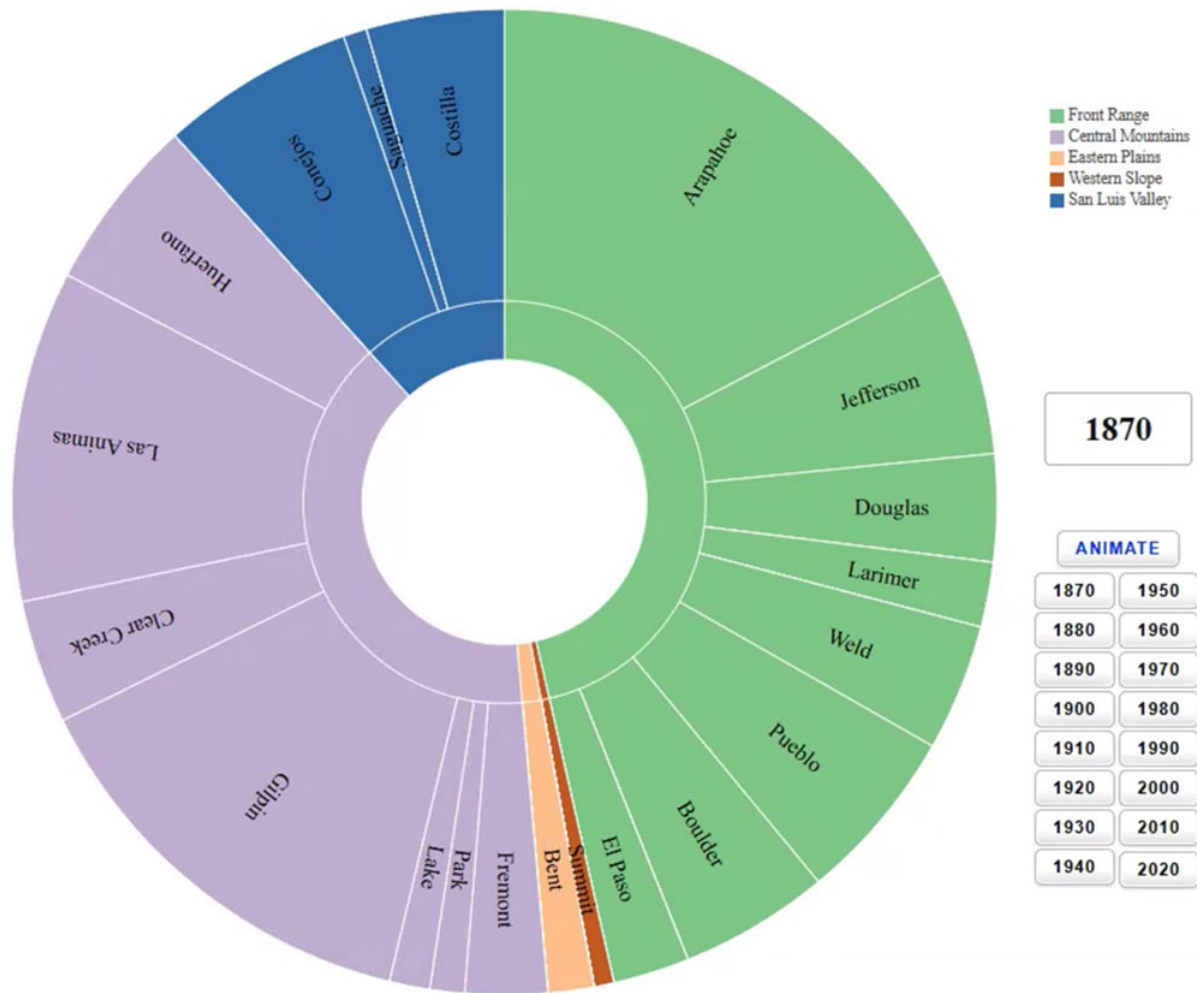


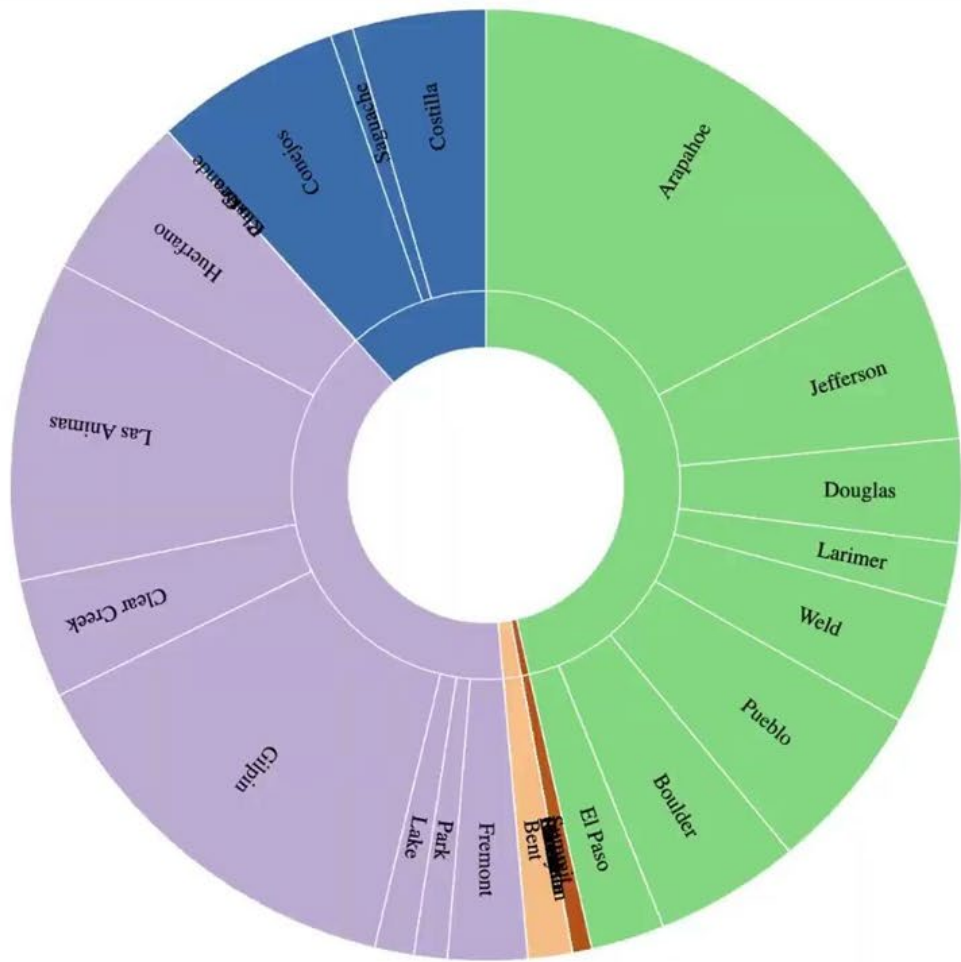
# COLORADO

<https://www.nass.usda.gov/AgCensus/>



**32.197% Decrease**



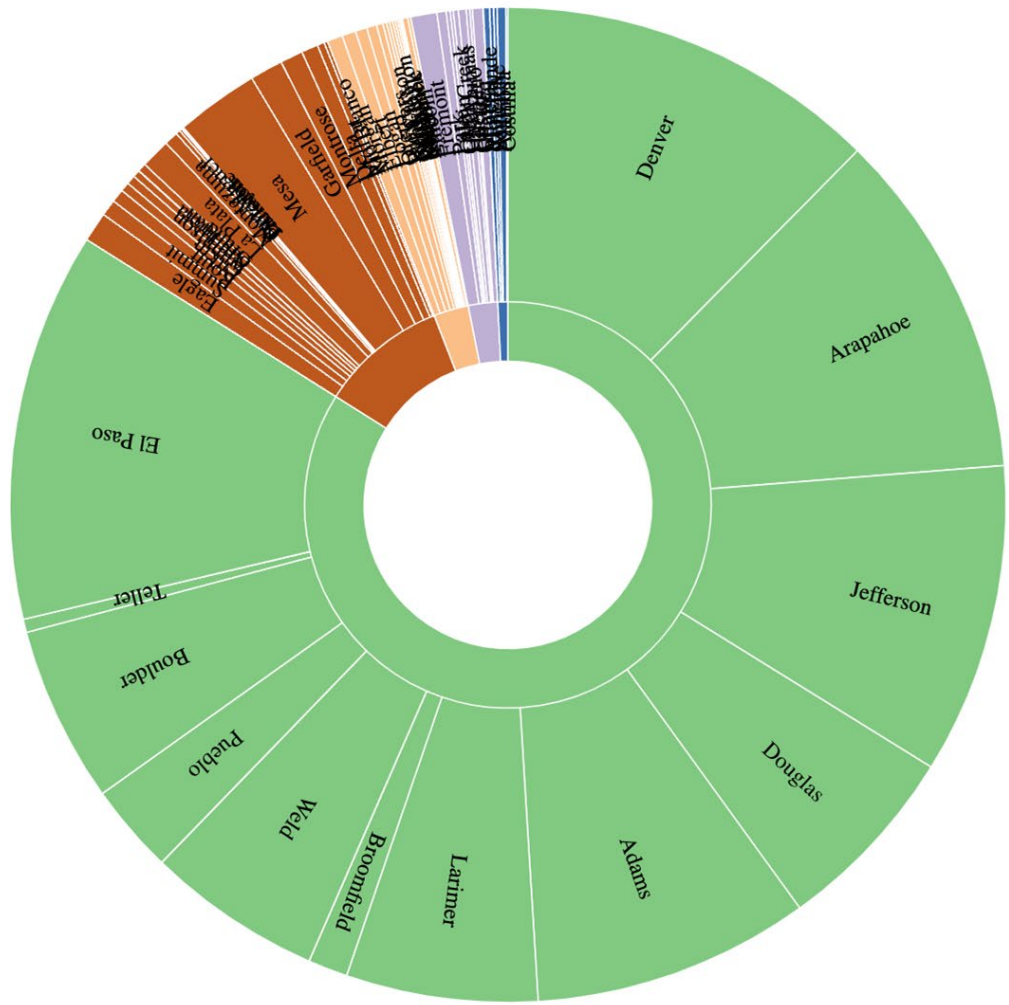


- Front Range
- Central Mountains
- Eastern Plains
- Western Slope
- San Luis Valley

1870

ANIMATE

1870	1950
1880	1960
1890	1970
1900	1980
1910	1990
1920	2000
1930	2010
1940	2020



- Front Range
- Central Mountains
- Eastern Plains
- Western Slope
- San Luis Valley

2020

ANIMATE

1870	1950
1880	1960
1890	1970
1900	1980
1910	1990
1920	2000
1930	2010
1940	2020

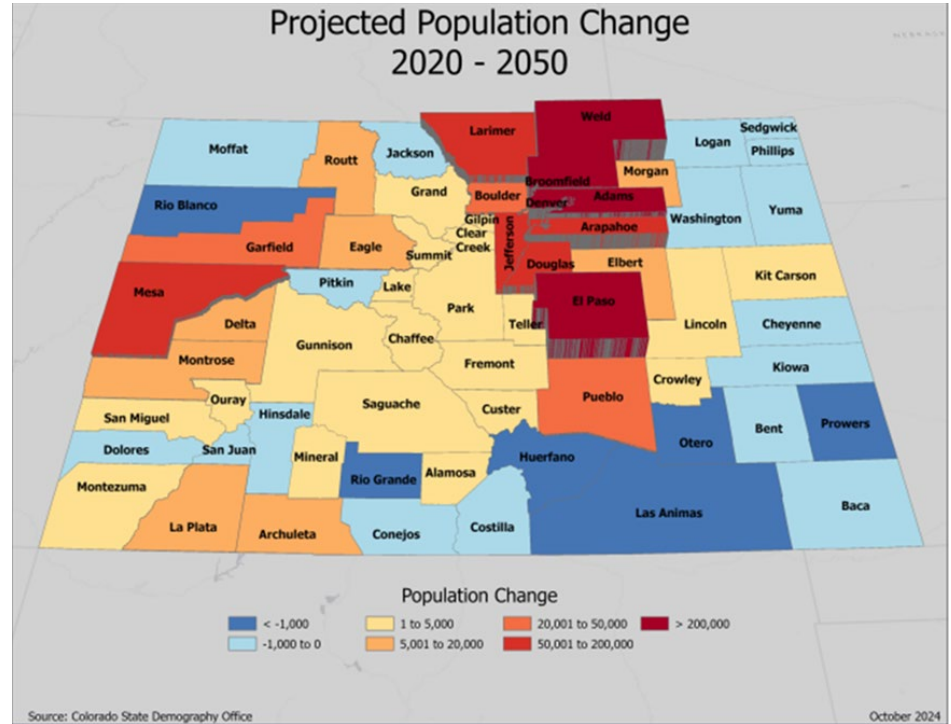
# The Colorado long-term forecast

## Statewide increase 1.6 Million

- 1.5M Front Range (90%)
  - 54% Denver-Boulder
  - 26% North Front Range
  - 20% South Front Range

## Only region with Natural Increase through 2050

- 150K Western Slope (9%)
- 9K Eastern Plains
- 9K Central Mountains and San Luis Valley



**COLORADO**  
Department of Local Affairs  
State Demography Office



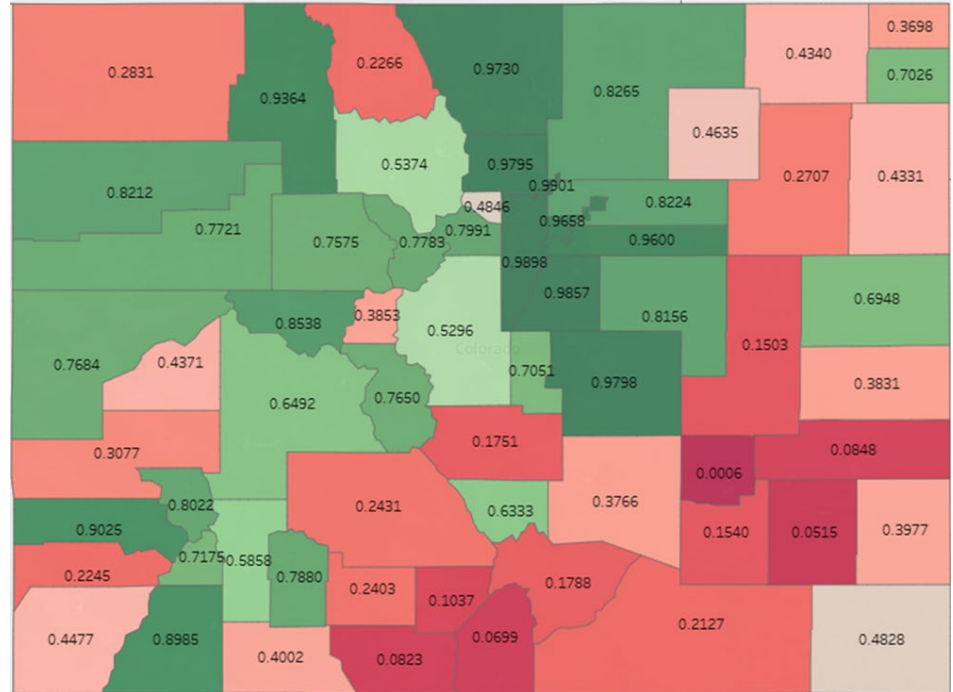
# County Economic Development Capacity Index (EDCI)

The EDCI uses publicly available data to assess critical elements that contribute to a county's overall economic development capacity.

Economic development capacity is comprised of the knowledge, skills, assets, and resources that foster prosperity, innovation, entrepreneurship, and high quality of life in a community



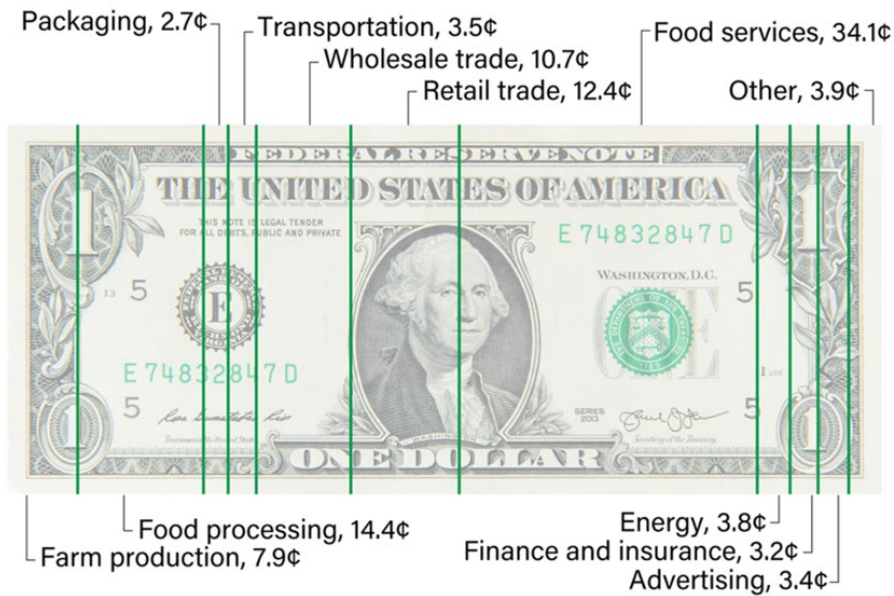
**COLORADO**  
Office of Economic Development  
& International Trade







# 2022 Food Dollar Series' industry group dollar, nominal



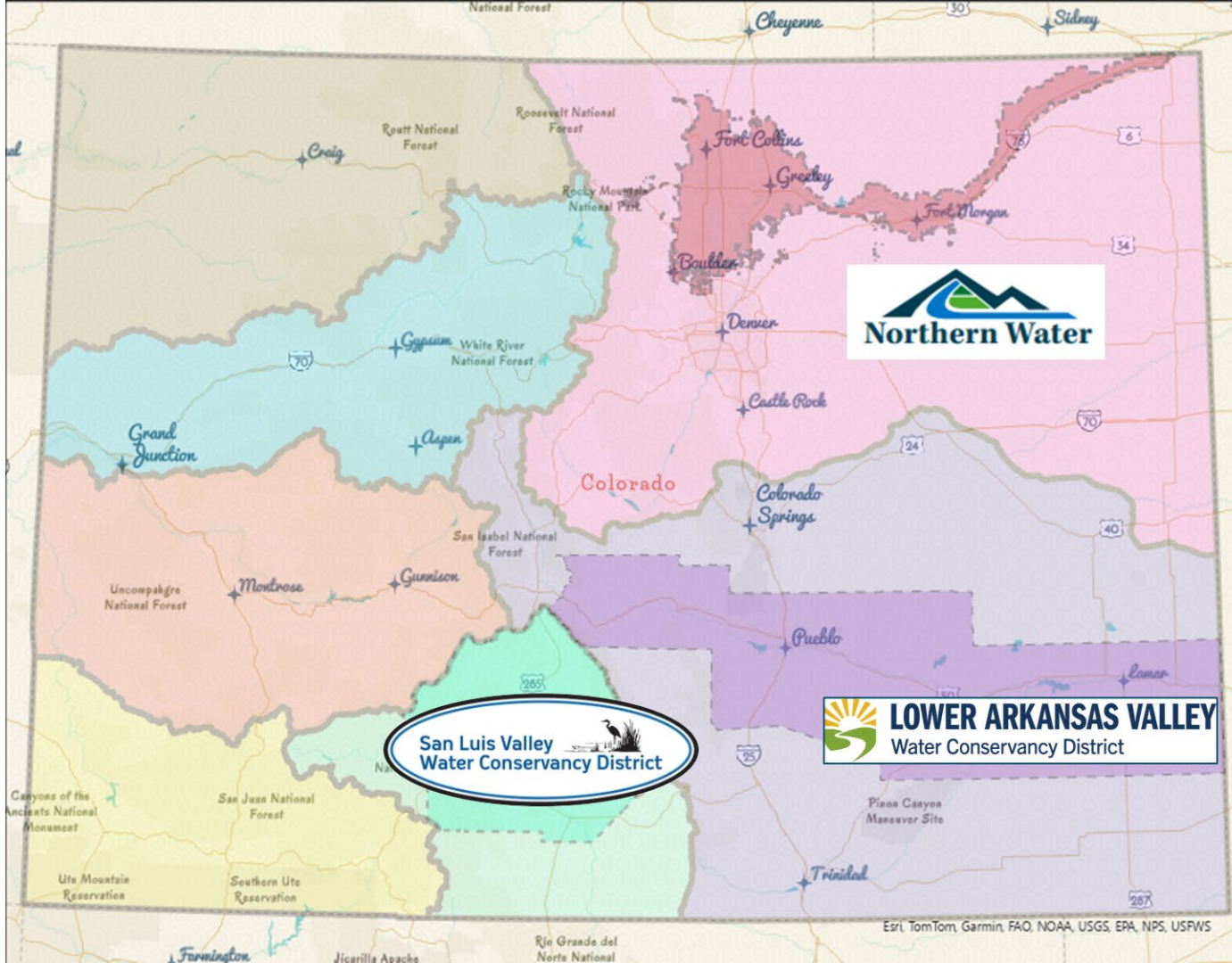
**Note:** The food dollar estimates provide the average industry group shares of each nominal, or unadjusted for inflation, dollar spent on domestically produced food in a year. Other includes Agribusiness (2.1 cents) and Legal and accounting (1.8 cents). *Source: USDA, Economic Research Service, Food Dollar Series*



# Topics around the state

- Managing Growth
- Water Transfers
- Republican River Compact Compliance
- Wildfire/Watershed Protection
- Groundwater Sustainability
- Water Quality
- Futile Call
- Postponement Doctrine
- Revegetation/Reclamation
- Non-functional Turf Removal
- Measurement Rules
- Co River Post 2026 Negotiations
- Perkins County Canal
- TX vs. NM on the Rio Grande River
- Modernization of Aging Agricultural Infrastructure
- Land Use Modelling efforts
- Instream Flow Adjunctions
- Dredge and Fill





# Northern Water & the C-BT Project

## Supplemental Supply

Municipal, ag, industrial and domestic water users

## Service Area

1.6 million acres  
8 counties

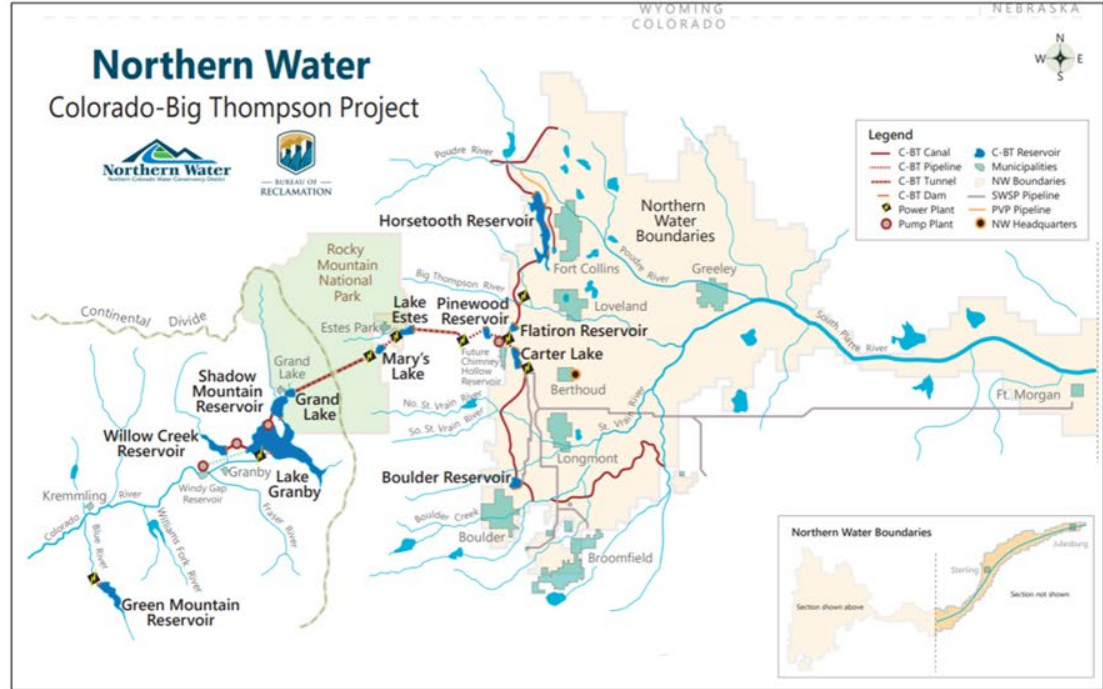
## Irrigated Land

615,000 acres

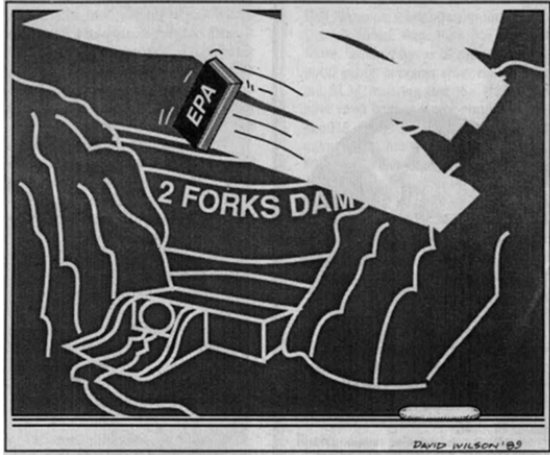
1,100,000+ residents

Northern Water joint operation with BOR

Average deliveries  
215,000 acre-foot/year



# Historical Context

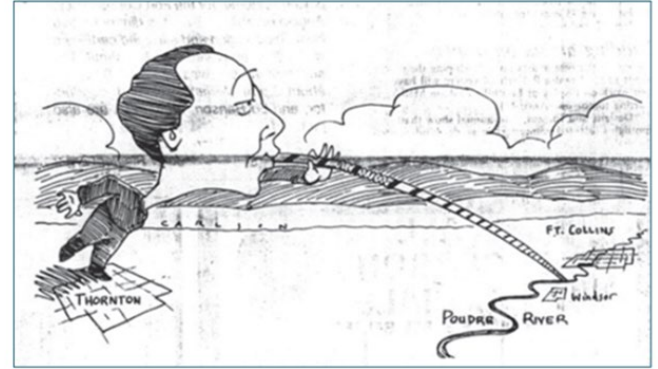


1990

**HOMESTAKE II**  
LOOKING AT THE  
POLITICS OF A  
DETESTED DIVERSION PROJECT  
1988



1992



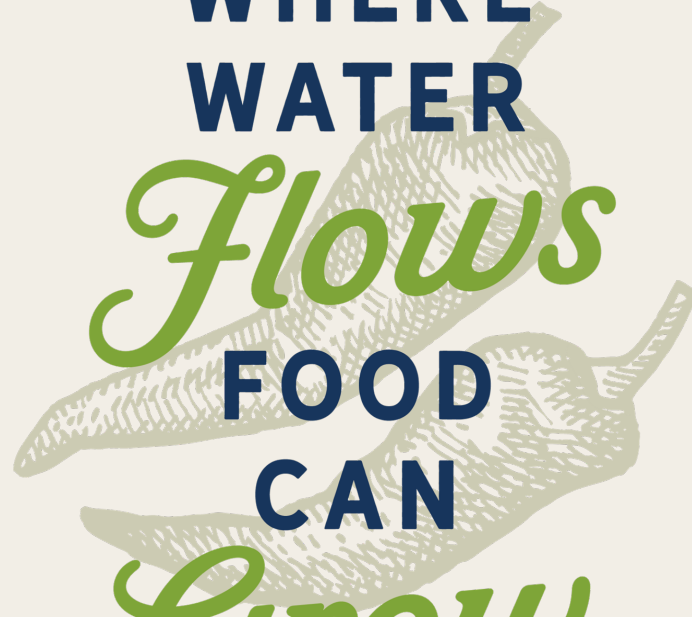
1986



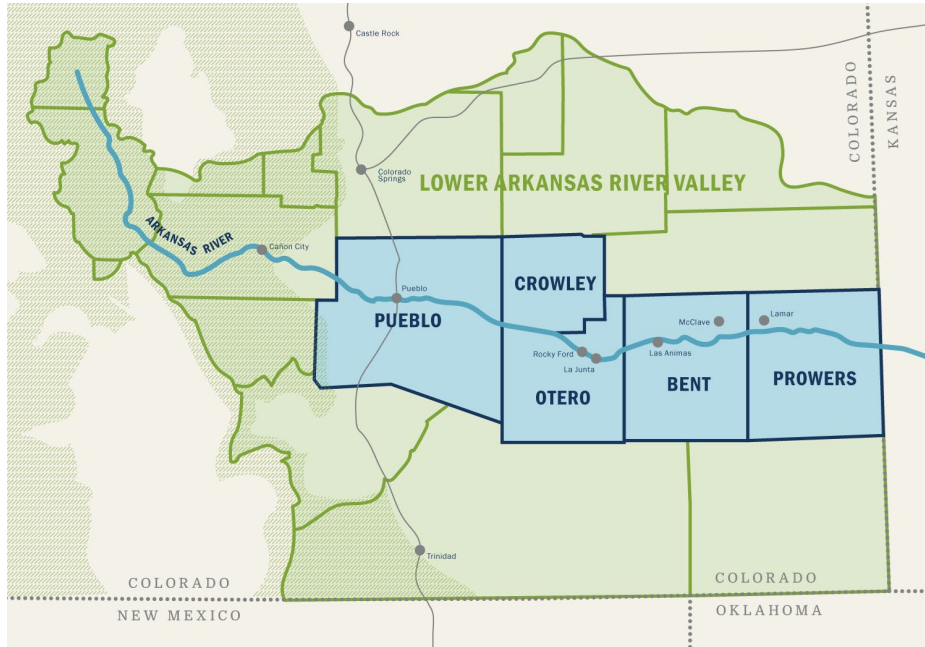
**Looking Back**

1990

**WHERE  
WATER**  
*Flows*  
**FOOD  
CAN**  
*Grow*

Two green chili peppers are positioned behind the text. One is at the top, pointing right, and the other is below it, pointing left. They are rendered in a light green, sketch-like style.

# Lower Arkansas Valley Water Conservancy District Priorities



Water  
Resource  
Protection



Irrigated Farmland  
Conservation



Water Quality  
Improvement



Advocacy





**COLORADO**  
Department of Agriculture



**LOWER ARKANSAS VALLEY**  
Water Conservancy District







# Colorado Water Plan

2.1 Expand ag water conservation, education and peer-to-peer programs that enhance innovation

2.2 Integrate capacity building efforts to support agriculture

2.3 Expand the scale of collaborative water sharing agreements

2.4 Streamline collaborative water sharing agreements

**2.5 Support the integration of robust agriculture into local government planning**

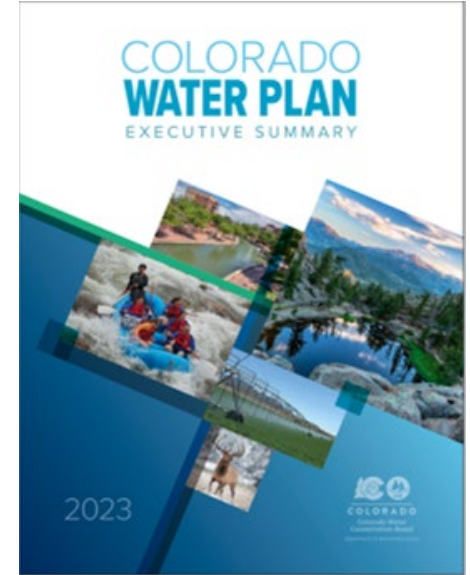
**2.6 Assess the economic opportunities of avoided buy and dry to communities, ecosystems and recreation**

2.6 Engage federal and state partners to streamline assistance for groundwater dependent regions

2.8 Streamline agriculture infrastructure funding

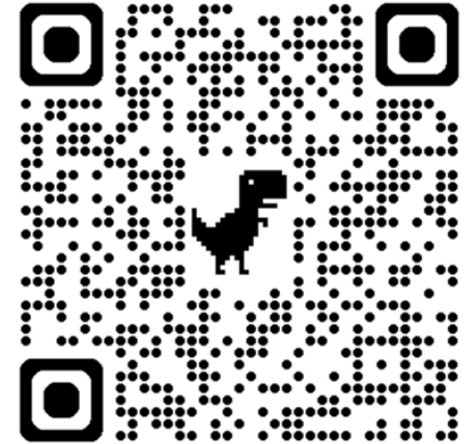
2.9 Assess agricultural impacts and best water practices for water quality protection

2.10 Integrate soil health, water conservation, and adaptive practices that increase economic outputs with less water





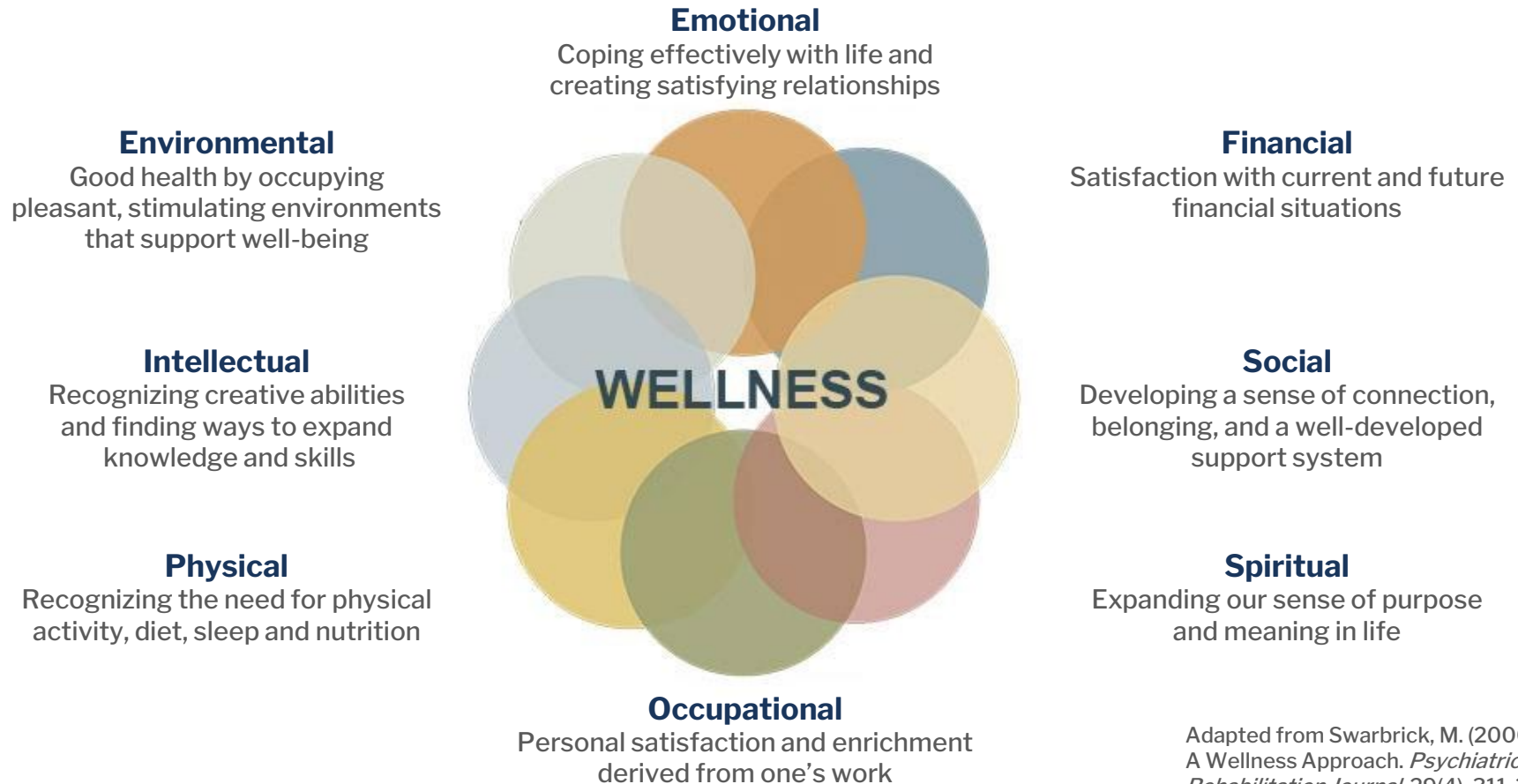
**More than 50,000 Americans took their own lives in 2023, the nation's highest yearly rate of suicide on record. Farmers are 3.5 times more likely to die by suicide than the general population, according to the National Rural Health Association. Special correspondent Megan Thompson reports from Wisconsin on the burden farmers often deal with and what's being done to help them.**



988

*PBS News*

# 8 Wellness Dimensions



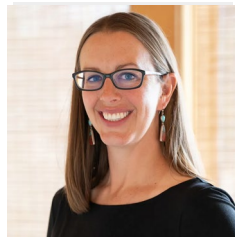
Adapted from Swarbrick, M. (2006).  
A Wellness Approach. *Psychiatric  
Rehabilitation Journal*, 29(4), 311-314

# Thank You

Want to continue the conversation?



**Robert Sakata**  
*Ag Water Policy Advisor*  
robert.sakata@state.co.us



**Heather Dutton**  
*Manager*  
heather@slvwcd.org



**Pat Wells**  
*Water Strategy Specialist*  
pwells@northernwater.org



**Jack Goble**  
*General Manager*  
jgoble@lowerark.com